

DMS (D190) Series

Moistureproof Plug Type Intermateable with CE02-2A and DMS Series



DMS (D190) series is intermateable with CE02-2A, DMS and MIL-C-5015 connectors.

These connectors meet the performance criteria of most factory automation applications as they withstand exposure to moisture, oil and vibration.

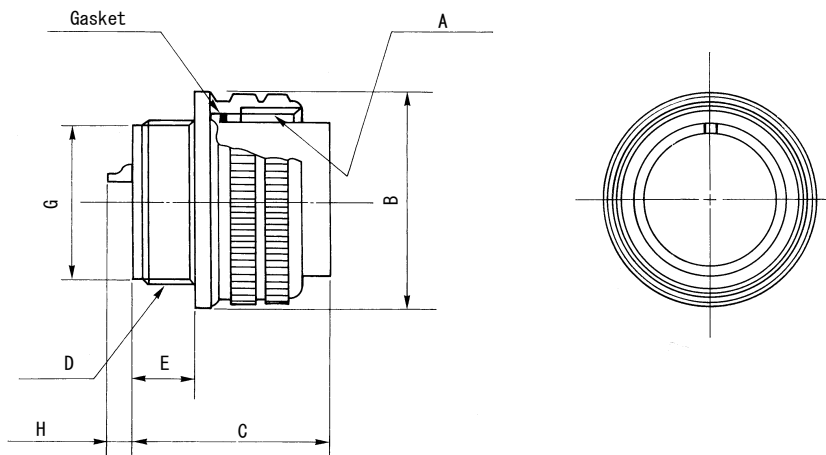
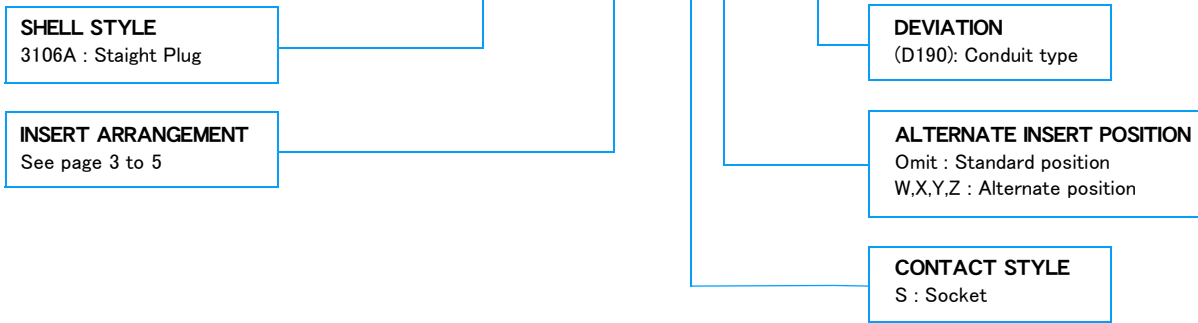
MATERIAL/FINISH

Shell	Aluminum alloy/Zinc plating, Olive drab chromate finish
Insulator	Diallyl phthalate resin/Blue
Contact	Copper alloy/Silver plating
Coupling Ring	Aluminum alloy/Zinc plating, Olive drab chromate finish
Retaining Ring	Phosphor bronze/Zinc plating, Olive drab chromate finish
Gasket	Nitrile rubber/Black

Specification

Contact Size	#16	#12	#8
Voltage Rating	250V AC (rms) 350V DC	350V AC (rms) 500V DC	350V AC (rms) 500V DC
Current Rating	13A max	23A max	46A max
Test Voltage	1000V AC (rms)	1500V AC (rms)	1500V AC (rms)
Insulation Resistance	1000M Ω min. at 500V DC		
Wire Size	AWG#16~#22	SWG#12~14	AWG#8~#10

DMS3106A20-29SW(D190)

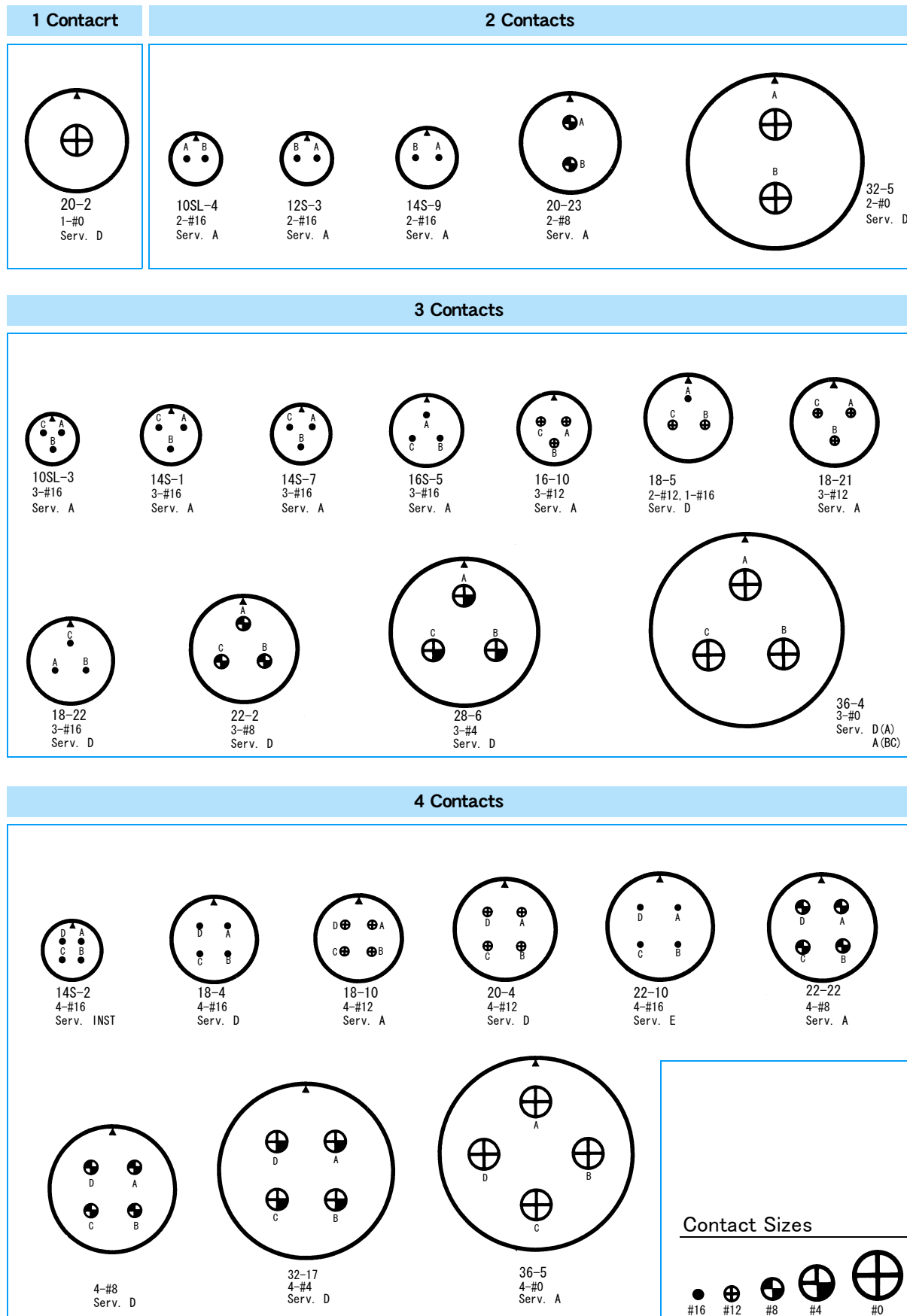


Shell Size	Coupling Threads A	B	C	Rear Threads D	E	G
10SL	5/8-24UNEF	22.22	23.30	9/16-24UNEF-2A	7.50	12.50
12S	3/4-20UNEF	25.40	24.43	1 1/16-24UNEF-2A	8.43	15.60
14S	7/8-20UNEF	28.57	24.34	3/4-20UNEF-2A	8.46	17.00
16S	1-20UNEF	31.75	24.38	7/8-20UNEF-2A	8.38	20.05
16	1-20UNEF	31.75	33.72	7/8-20UNEF-2A	11.76	20.26
18	1 1/8-18UNEF	34.13	33.72	1-20UNEF-2A	11.74	23.50
20	1 1/4-18UNEF	37.28	34.11	1 1/8-18UNEF-2A	12.16	26.80
22	1 3/8-18UNEF	40.48	34.11	1 1/4-18UNEF-2A	12.15	29.90
24	1 1/2-18UNEF	43.63	36.58	1 3/8-18UNEF-2A	13.42	32.90
28	1 3/4-18UNS	50.00	37.03	1 5/8-18UNEF-2A	13.07	38.98
32	2-18UNS	56.33	36.95	1 7/8-16UN-2A	13.14	45.30
36	2 1/4-16UN	62.68	37.44	2 1/8-16UN-2A	13.60	51.60

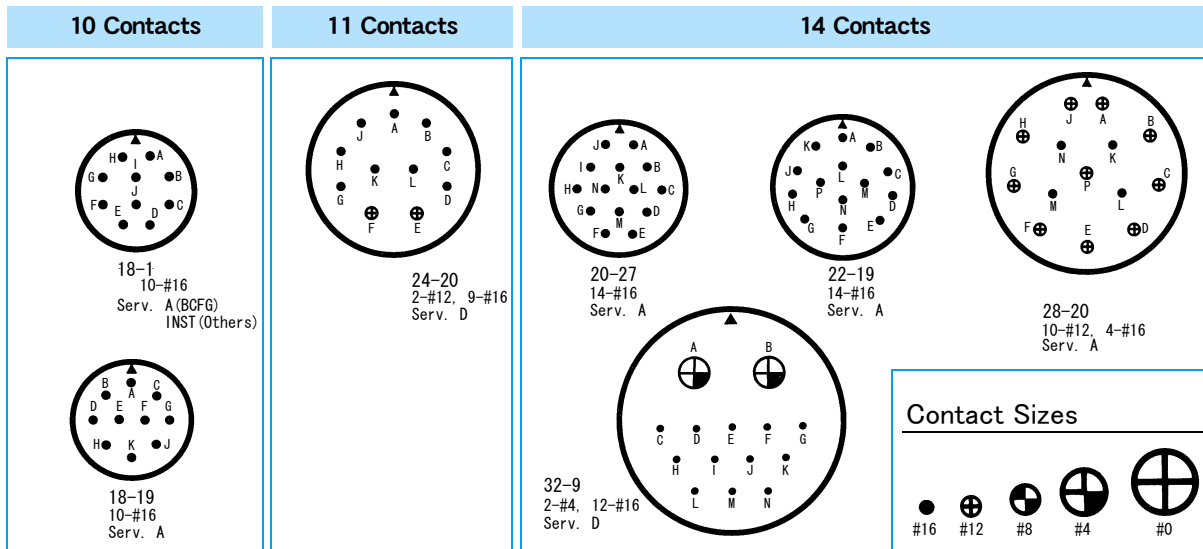
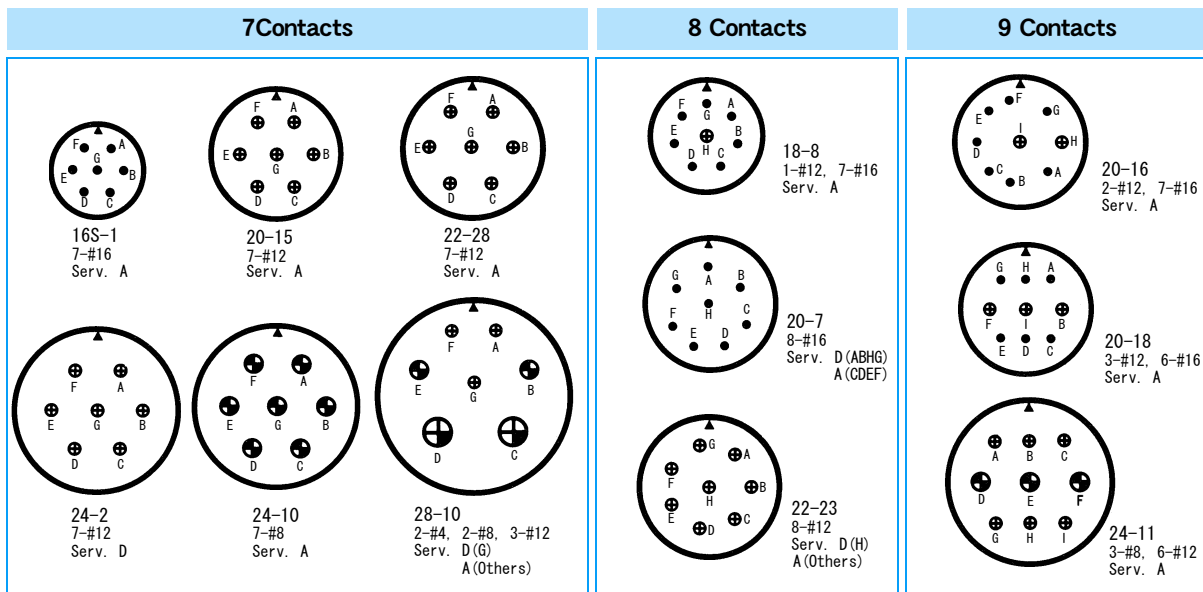
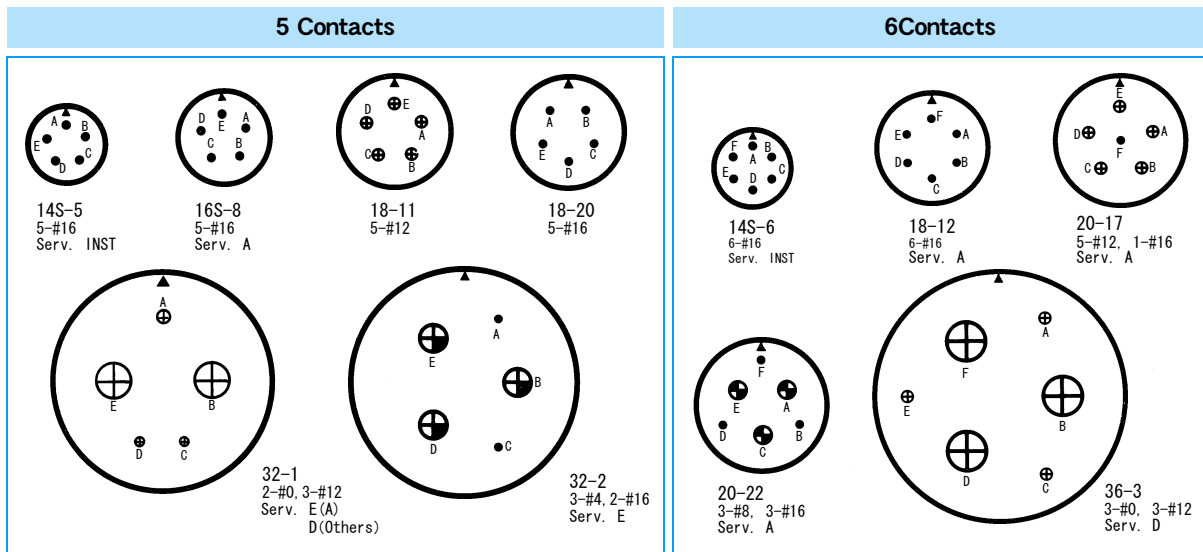
	Contact Size				
	#16	#12	#8	#4	#0
H	8max	8max	16max	13max	13max

DMS (D190) Series

Insert Arrangements (Front View of Pin Insert)



Insert Arrangements (Front View of Pin Insert)

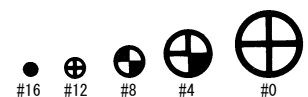


DMS (D190) Series

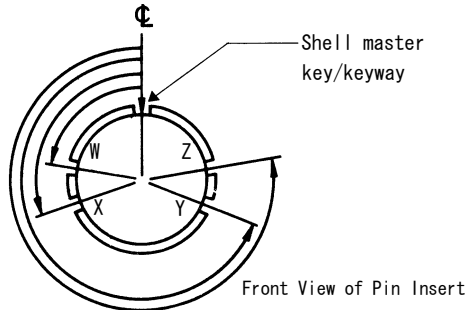
Insert Arrangements (Front View of Pin Insert)

16 Contacts	17 Contacts	19 Contacts	20 Contacts
<p>24-5 16-#16 Serv. A</p>	<p>24-7 2-#12, 14-#16 Serv. A</p>	<p>20-29 17-#16 Serv. A</p>	<p>22-14 19-#16 Serv. A</p>
22Contacts	24Contacts	26Contacts	30Contacts
<p>28-11 4-#12, 18-#16 Serv. A</p>	<p>24-28 24-#16 Serv. A</p>	<p>28-12 26-#16 Serv. A</p>	<p>32-8 6-#12, 24-#16 Serv. A</p>
31Contacts	35Contacts	37Contacts	
<p>36-9 1-#4, 2-#8 14-#12, 14-#16 Serv. A</p>	<p>28-15 35-#16 Serv. A</p>	<p>32-7 7-#12, 28-#16 Serv. INST (ABh); A (others)</p> <p>28-21 37-#12 Serv. A</p>	
48Contacts	52Contacts	54Contacts	73Contacts
<p>36-10 48-#16 Serv. A</p>	<p>32-414 52-#16 Serv. A</p>	<p>32-A10 54-#16 Serv. A</p>	<p>36-73 73-#16 Serv. A</p>

Contact Sizes



Alternate Insert Positions



No. of Contacts	Insert No.	W	X	Y	Z
1	20-2	—	—	—	—
	10SL-4	—	—	—	—
2	12S-3	70°	145°	215°	290°
	14S-9	70	145	215	290
	20-23	35	110	250	325
	32-5	35	110	250	325
	10SL-3	—	—	—	—
3	14S-1	—	—	—	—
	14S-7	90	180	270	—
	16S-5	70	145	215	290
	16-10	90	180	270	—
	18-5	80	110	250	280
	18-21	—	—	—	—
	18-22	70	145	215	290
	22-2	70	145	215	290
	28-6	70	145	215	290
	36-4	70	145	215	290
4	14S-2	—	120	240	—
	18-4	35	110	250	325
	18-10	—	120	240	—
	20-4	45	110	250	—
	22-10	35	110	250	325
	22-22	—	110	250	—
	24-22	45	110	250	—
	32-17	45	110	250	—
	36-5	—	120	240	—
5	14S-5	—	110	—	—
	16S-8	—	170	265	—
	18-11	—	170	265	—
	18-20	90	180	270	—
	32-1	80	110	250	280
	32-2	70	145	215	290
6	14S-6	—	—	—	—
	18-12	80	—	—	280
	20-17	90	180	270	—
	20-22	80	110	250	280
36-3	70	145	215	290	

No. of Contacts	Insert No.	W	X	Y	Z
7	16S-1	80	—	—	280
	20-15	80	—	—	280
	22-28	80	—	—	280
	24-2	80	—	—	280
	24-10	80	—	—	280
8	28-10	80	110	250	280
	18-8	70	—	—	290
	20-7	80	110	250	280
9	22-23	35	—	250	—
	20-16	80	110	250	280
	20-18	35	110	250	325
10	24-11	35	110	250	325
	18-1	70	145	215	290
11	18-19	—	120	240	—
	24-20	80	110	250	280
14	20-27	35	110	250	325
	22-19	80	110	250	280
	28-20	80	110	250	280
16	32-9	80	110	250	280
	24-5	80	110	250	280
17	24-7	80	110	250	280
	20-29	80	—	—	280
19	22-14	80	110	250	280
20	28-16	80	110	250	280
22	28-11	80	110	250	280
24	24-28	80	110	250	280
26	28-12	90	180	270	—
30	32-8	80	125	235	280
31	36-9	80	125	235	280
35	28-15	80	110	250	280
	32-7	80	125	235	280
37	28-21	80	110	250	280
48	36-10	80	125	235	280
52	32-414	80	110	250	280
54	32A-10	—	—	—	—
73	36-73	80	110	250	280